



Wall Panel Construction Guide

This guide is provided free by [Haunt Design Kit.com](http://HauntDesignKit.com)

The blue prints included DO NOT include any pricing guides or statistics. Please check with your local lumber provider for current pricing and availability

Materials

(4) 2x4x96 Stud

(1) 4'x8' Plywood Sheet

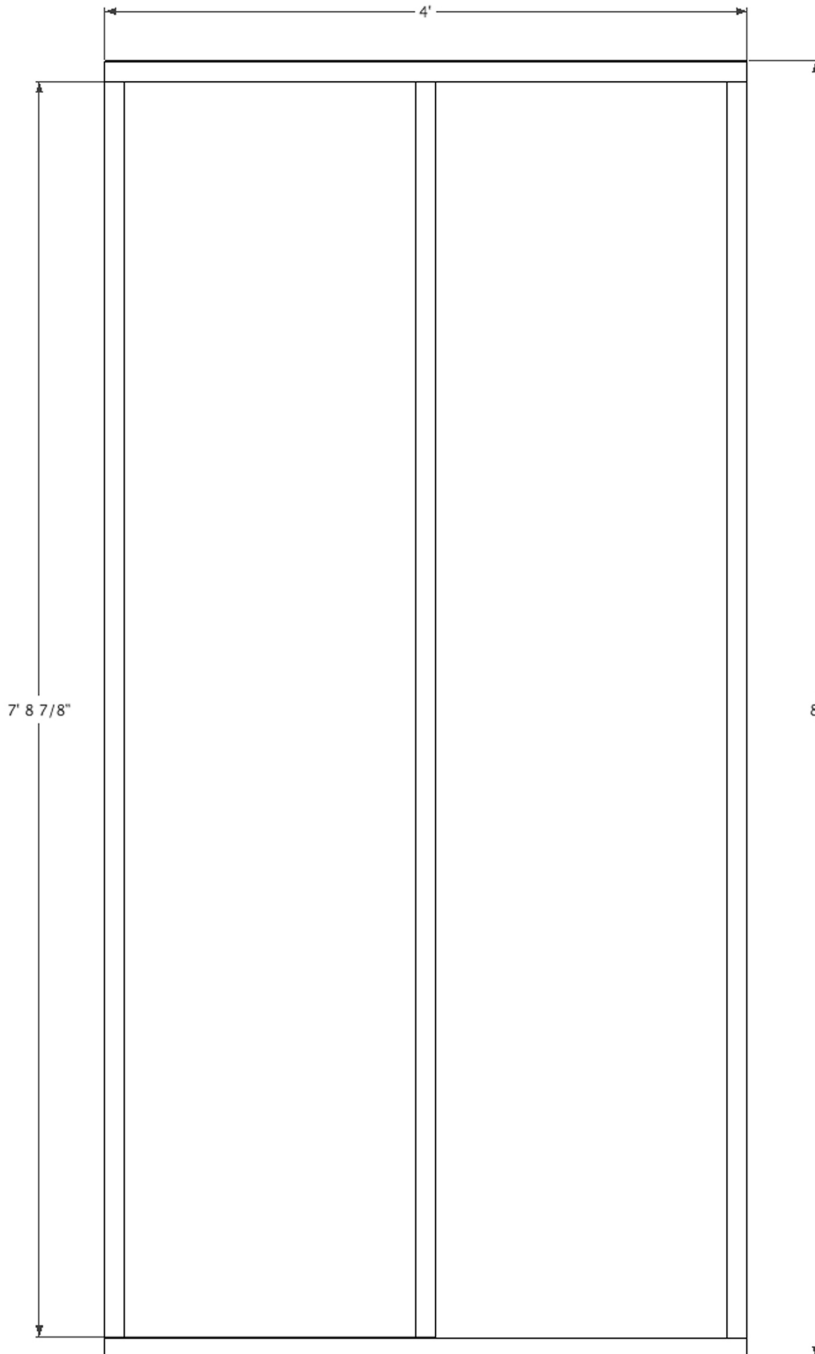
Directions

1. Cut one 2x4x96 stud exactly in half, making two 2x4x48 pieces. These make the top and bottom support pieces to your wall panel. (Should be exactly 4' in length.)

2. Cut 3" off the remaining studs. This will give you three vertical supports measuring exactly 2x4x93

3. Start attaching the studs together as per the diagram. **DO NOT USE NAILS OR A NAIL GUN.** Always **SCREW** your wall panels together for added strength, decreased destruction of the wood and easy repairing. Panel frame should be exactly 4'x8'.

4. Screw plywood sheet to frame, squaring the corners as you go.



* Actual measurements of a 2x4 stud are 1.5"x3.5". The directions presented here are already adjusted to these measurements.

Materials

(4) 2x4x96 Stud

(1) 4'x8' Plywood Sheet

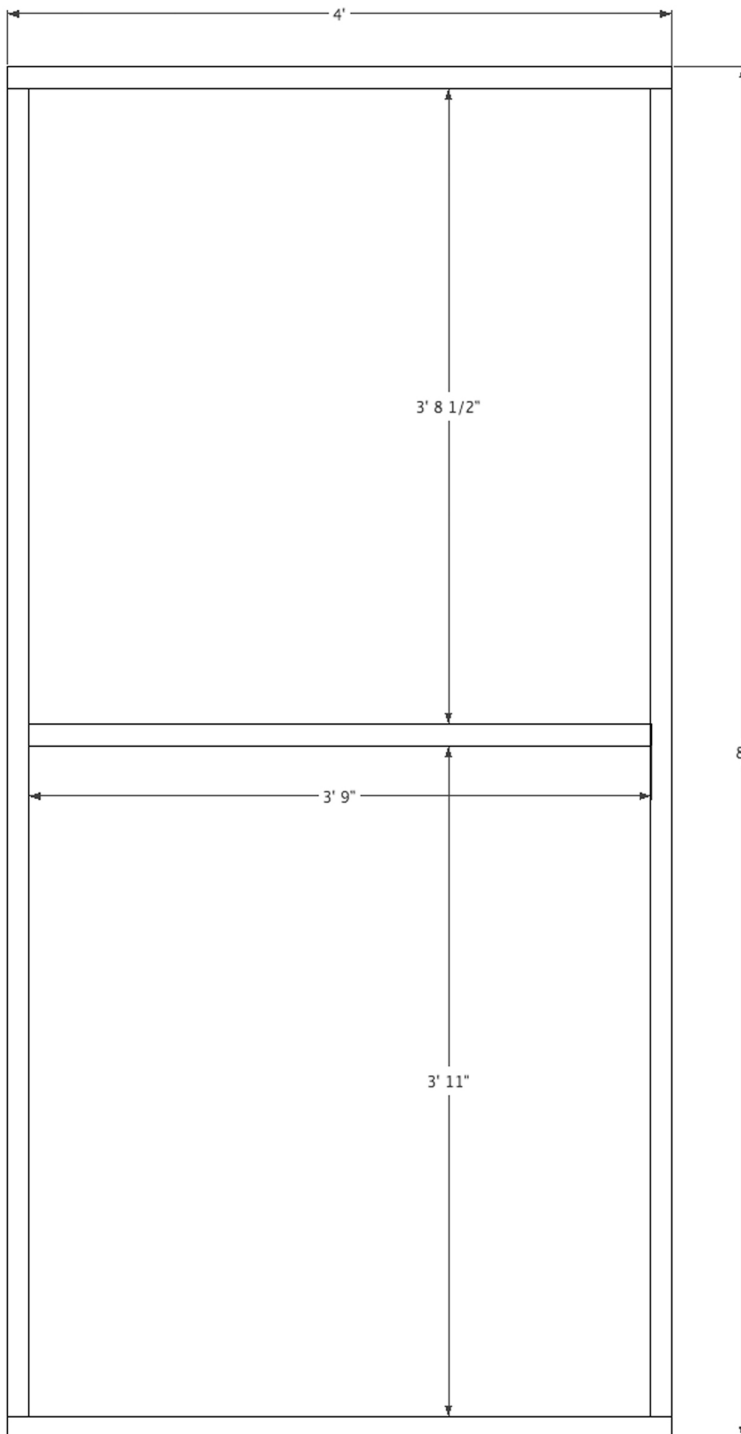
Directions

1. Cut one 2x4x96 stud exactly in half, making two 2x4x48 pieces. These make the top and bottom support pieces to your wall panel. (Should be exactly 4' in length.)

2. Cut 3" off the remaining studs. This will give you three vertical supports measuring exactly 2x4x93. Take one of these studs and cut exactly in half making two 2x4x46.5"

3. Start attaching the studs together as per the diagram. **DO NOT USE NAILS OR A NAIL GUN.** Always **SCREW** your wall panels together for added strength, decreased destruction of the wood and easy repairing. Panel frame should be exactly 4'x8'.

4. Screw plywood sheet to frame, squaring the corners



* Actual measurements of a 2x4 stud are 1.5"x3.5". The directions presented here are already adjusted to these measurements.



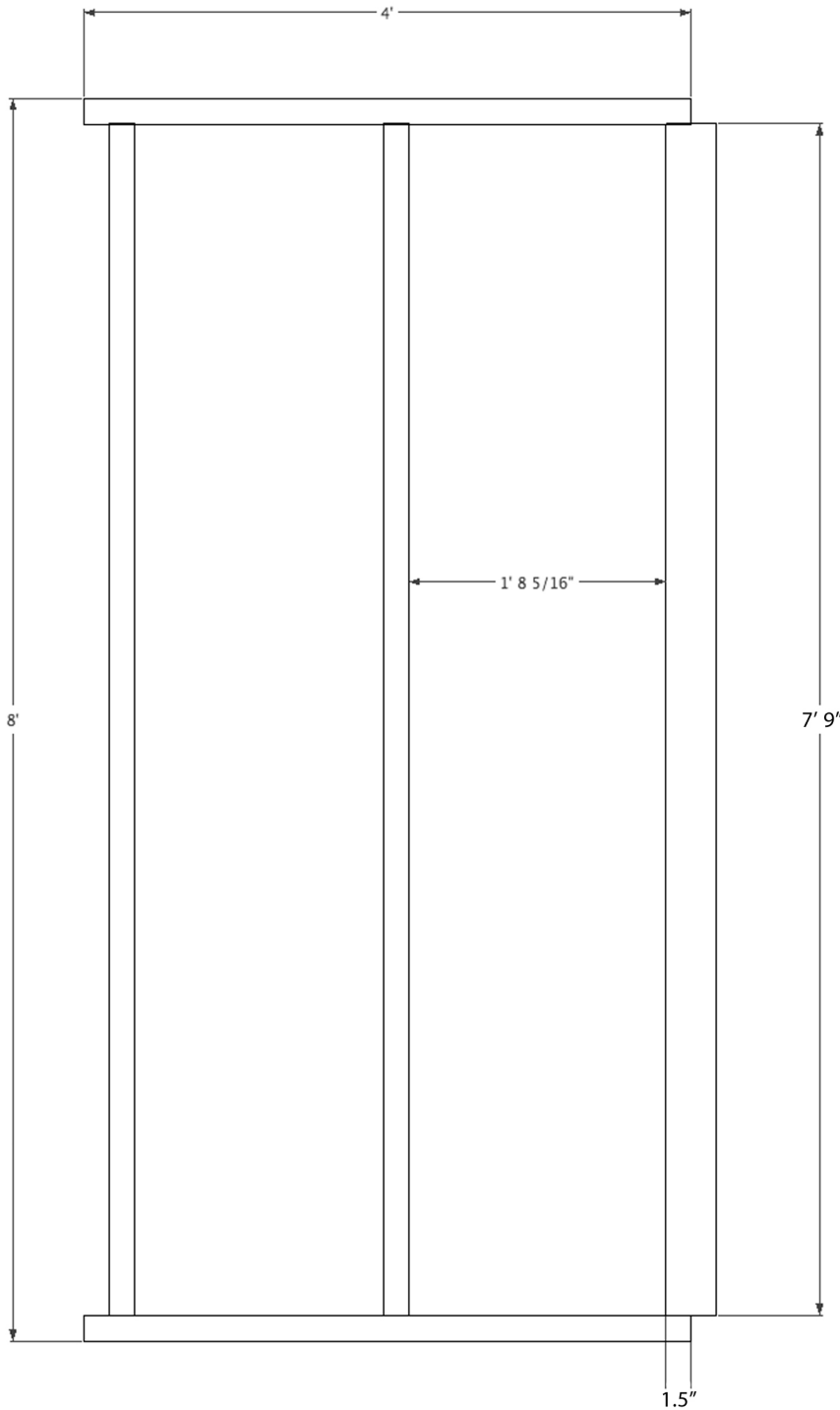
4'x8' Interlocking Wall Panel

Materials

- (1) 2x4x96 Stud
- (3) 2x2x96
- (1) 4'x8' Plywood Sheet

Directions

1. Cut 3" off the 2x4x96 stud.
2. Cut one of the 2x2 studs exactly in half, making two 4' long pieces. These make the top and bottom support pieces to your wall panel.
3. Cut 3" off the remaining 2x2 studs. This will give you two vertical supports measuring exactly 2x2x93. Take one of these studs and cut exactly in half making two 2x4x46.5"
4. Start attaching the studs together as per the diagram. DO NOT USE NAILS OR A NAIL GUN. Always SCREW your wall panels together for added strength, decreased destruction of the wood and easy repairing. Panel frame should be exactly 4'x8'.



* Actual measurements of a 2x4 stud are 1.5"x3.5". The directions presented here are already adjusted to these measurements.



4'x8' Interlocking Wall Panels 3D Diagrams

