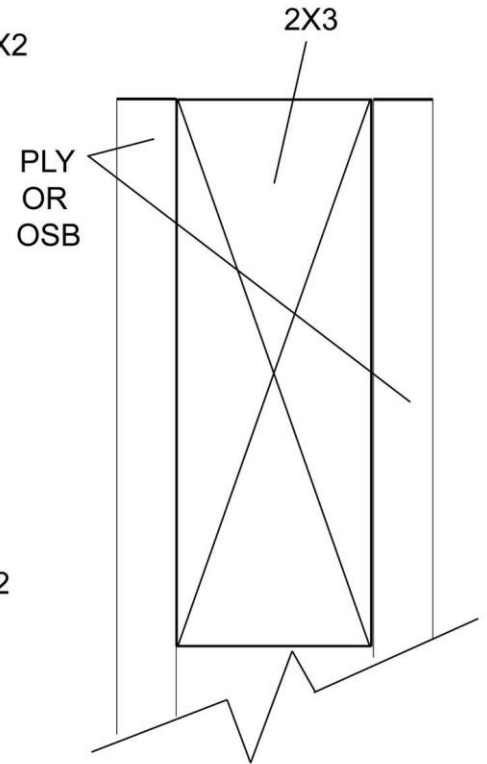
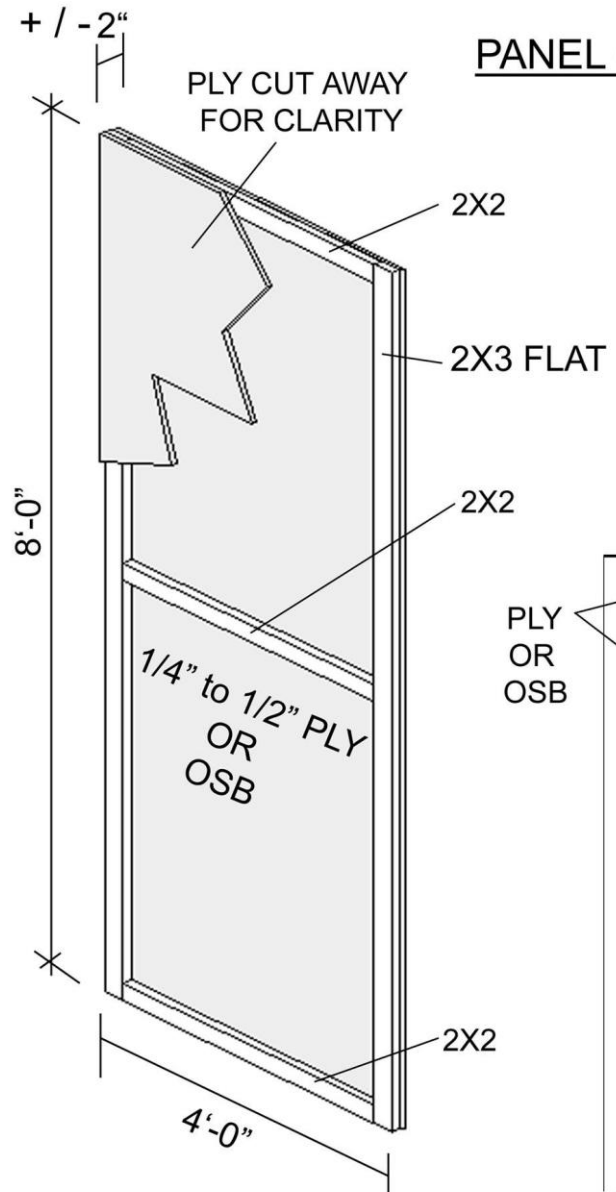
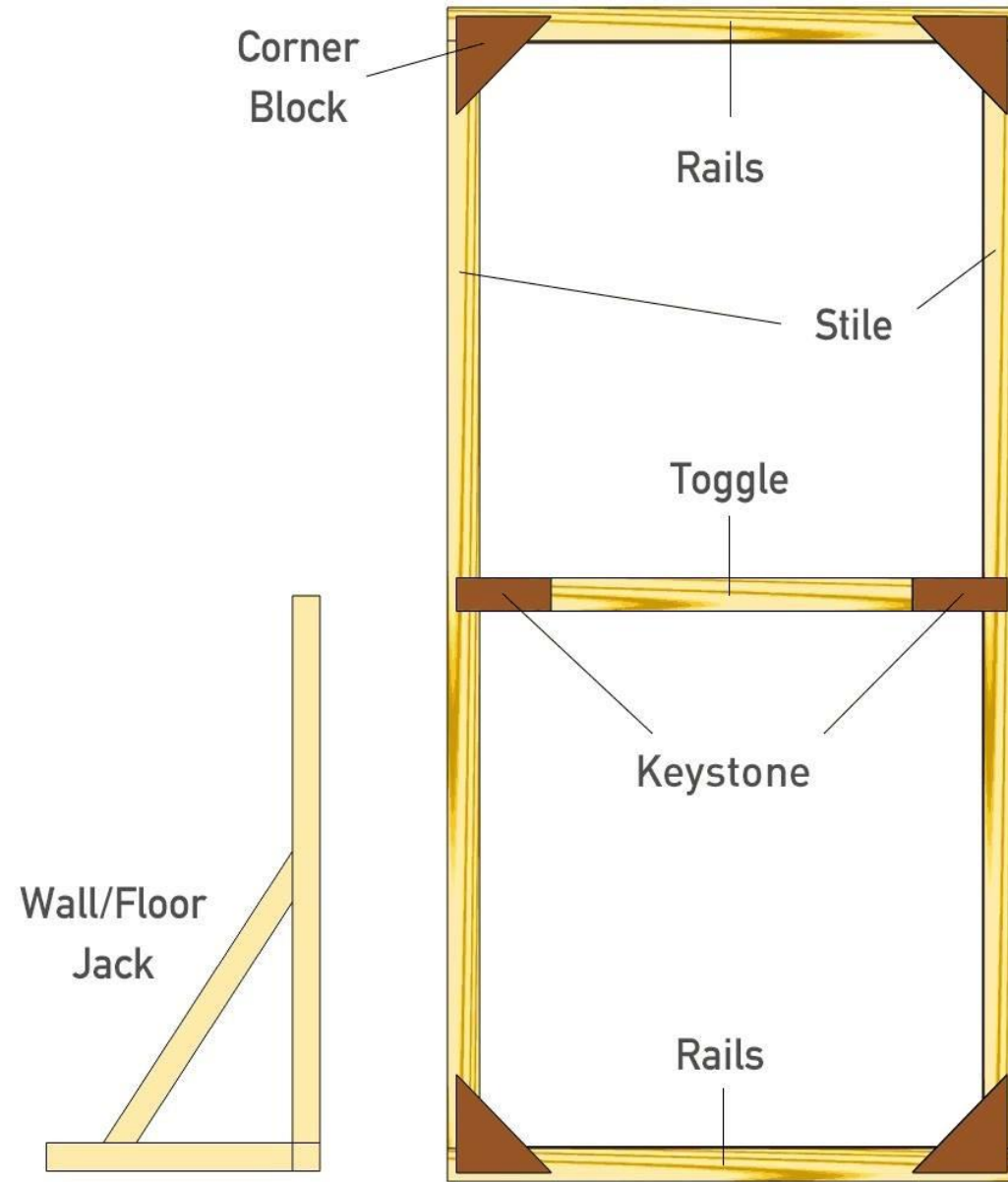


PANEL CONSTRUCTION



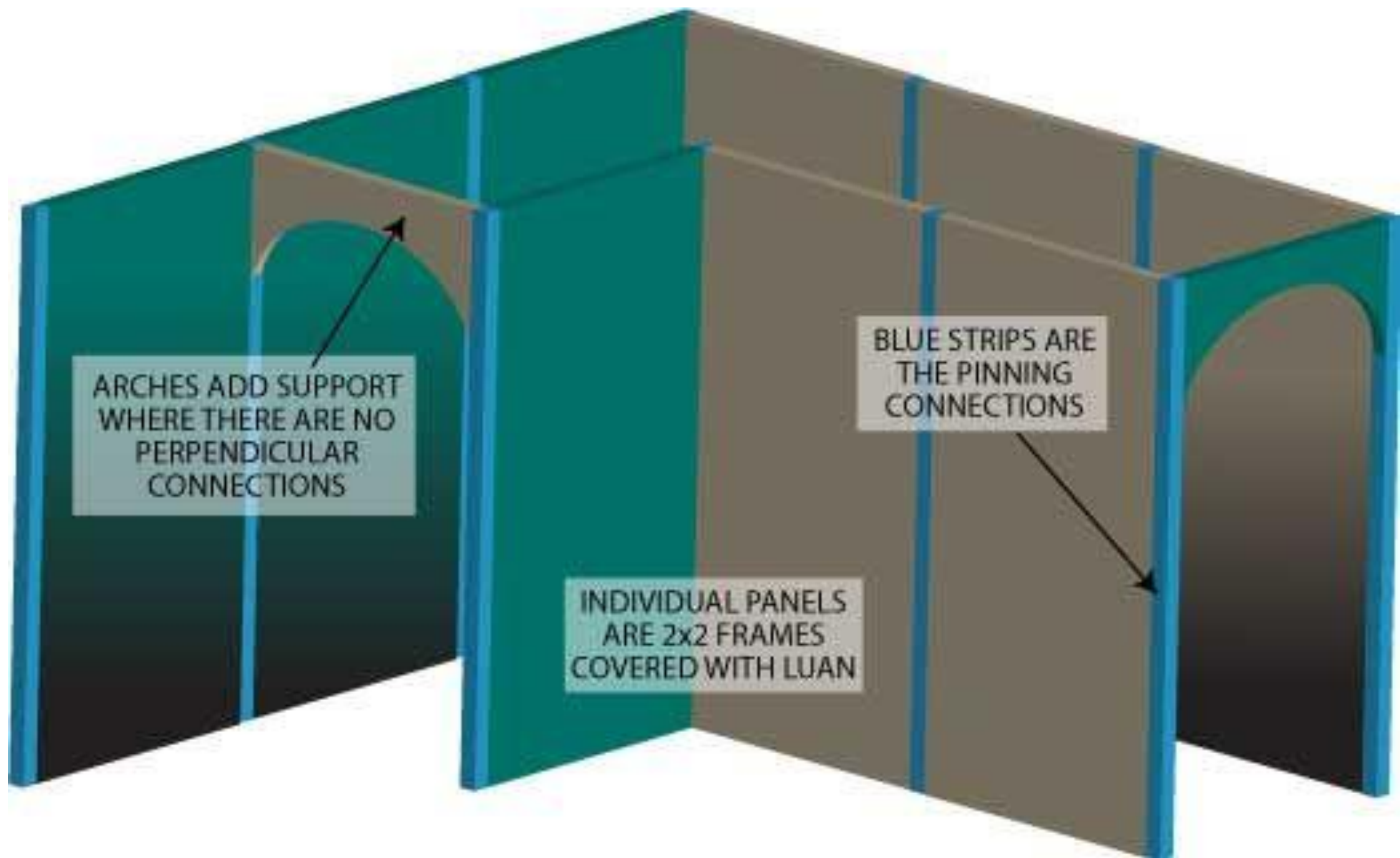
ISOMETRIC VIEW

SECTION VIEW









ARCHES ADD SUPPORT
WHERE THERE ARE NO
PERPENDICULAR
CONNECTIONS

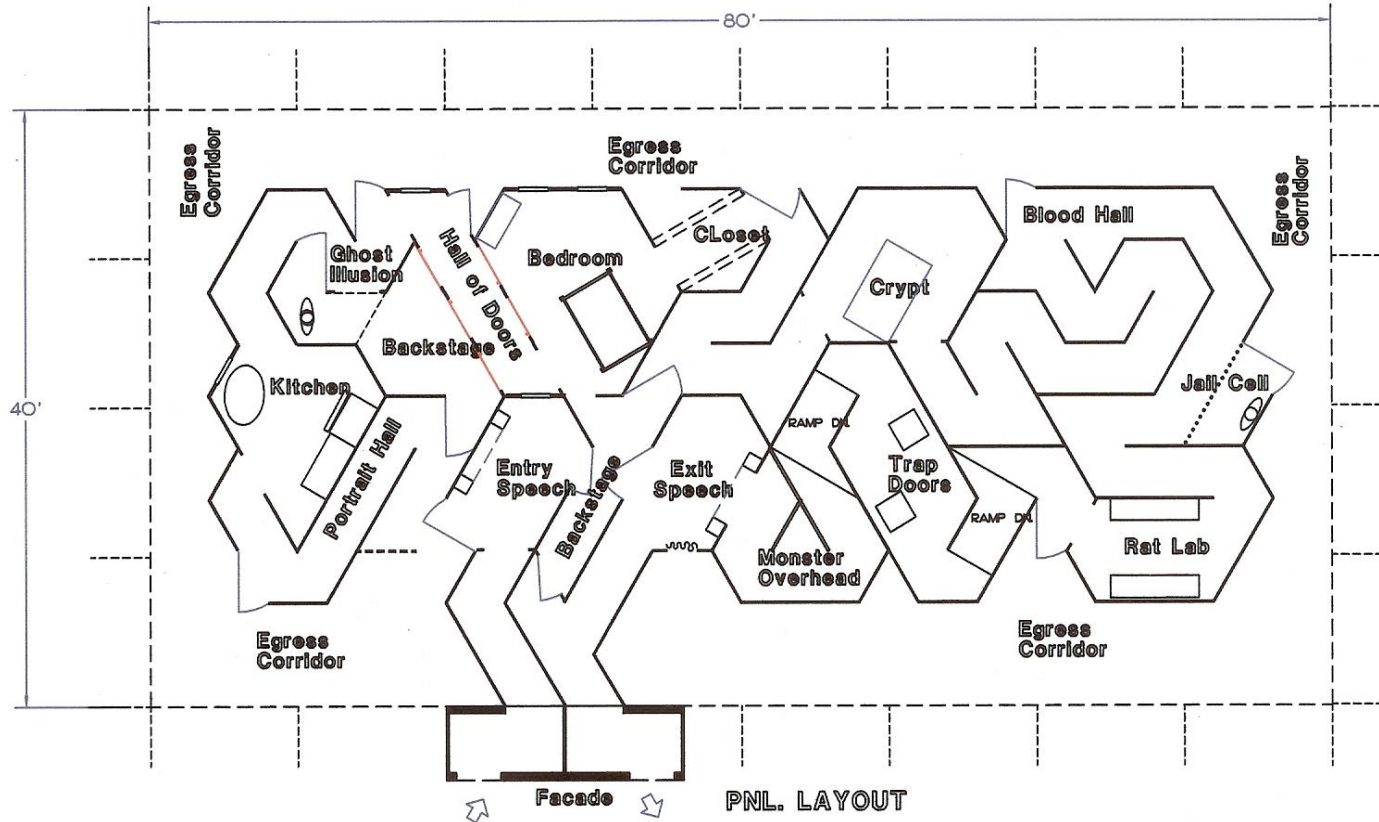
BLUE STRIPS ARE
THE PINNING
CONNECTIONS

INDIVIDUAL PANELS
ARE 2x2 FRAMES
COVERED WITH LUAN



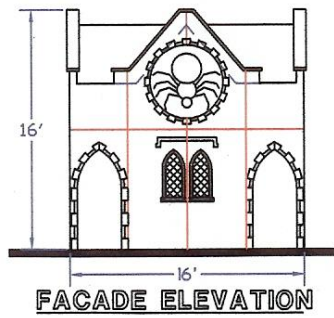




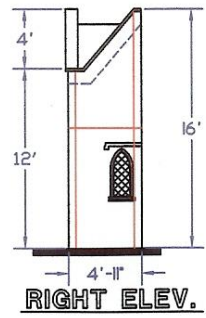


COPYRIGHT 2003, D.O.A. - All Rights Reserved

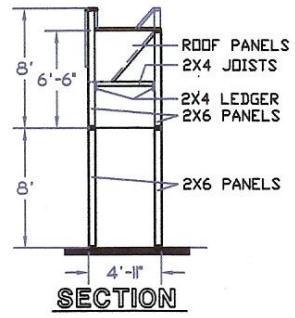
PNL LAYOUT



FACADE ELEVATION



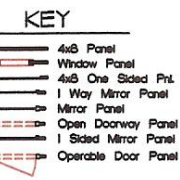
RIGHT ELEV.



SECTION

GENERAL NOTES

- Attraction is a pre-engineered temporary attraction designed for quick install, reconfiguration and strike.
- The attraction is designated as a "Revolving Exhibit" and only the perimeter walls are permanent construction.
- Posted Maximum Occupancy of 299 people.
- All egress doors are spring closing, non-latching.
- Pre-manufactured modular wall panels are flame resistant.
- All wall panels are free standing modular units.
- All decorations and fabrics are fire retardant.
- Hallways and ramps are ADA accessible.
- All Doorways are min. 3' x 6'-8\".
- No dead end corridors.
- All doors open in the direction of travel.
- Maximum egress distance is less than 200'-0\".
- All emergency lights and lighted Exit signs have battery back up.
- House PA system provided.
- All platforms and ramps are built to local code.



REVISIONS		
NO.	DATE	DESCRIPTION

Mayhem Manor[®]

Copyright 2005 Leonard Pickel all rights reserved

D.O.A.

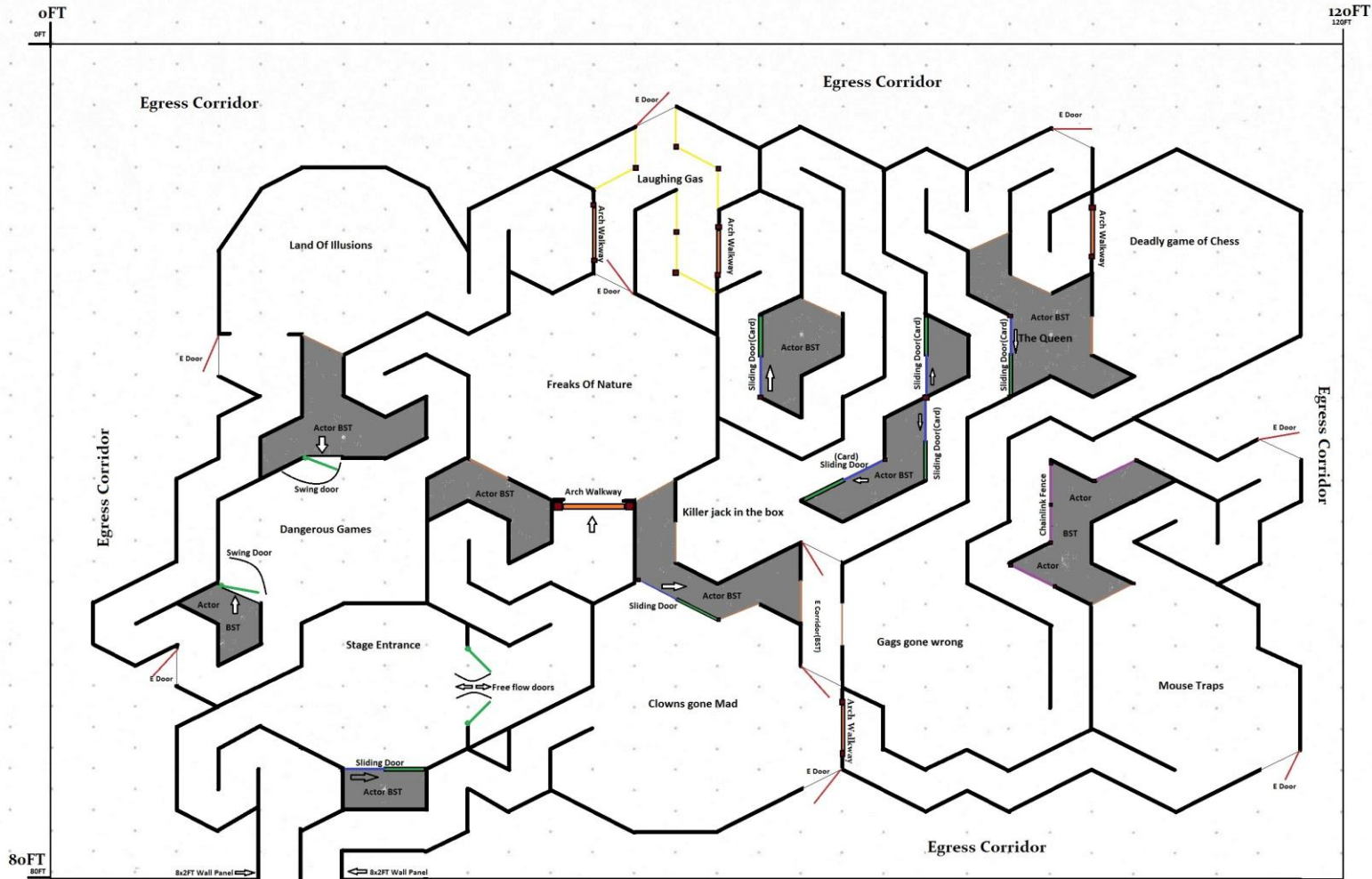
PO BOX 55286 CHARLOTTE, NC 28255
704 555-0255 FAX 704 555-0255

SHEET TITLE
PNL LAYOUT

DATE
9-04-03

SHEET NO.
A2

COPYRIGHT 2003 D.O.A.
All Rights Reserved



80FT
80FT

120FT
120FT

Egress Corridor

Egress Corridor

Egress Corridor

Egress Corridor

Entrance

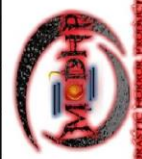
Exit

Key	
	8x4FT Wall Panel
	Sliding wall Panel
	Operable Door
	Emergency Door
	Actor Curtain
	Railings
	Cyclone Fencing
	Vertical support
	BST: Actor Bactstage Area
	7 outer E doors
	3 interior E doors
	All Edoors are spring closing, non latching

Midway Carnage

Copyright 2011 Corlandus Lang. All rights Reserved

File Isometric Docs_Graph Paper from: <http://incompetech.com/graphpaper/iso.html>



MOBHP logo images: roguescrusher

